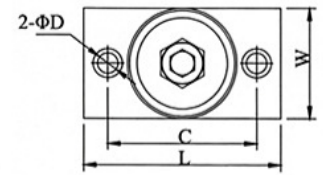
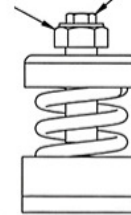


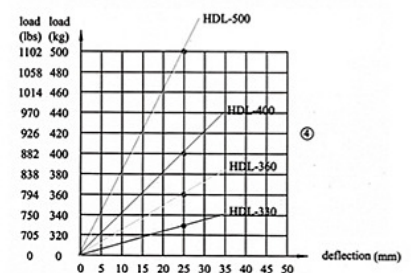
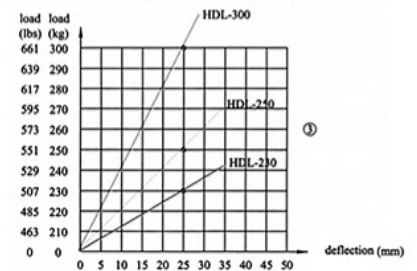
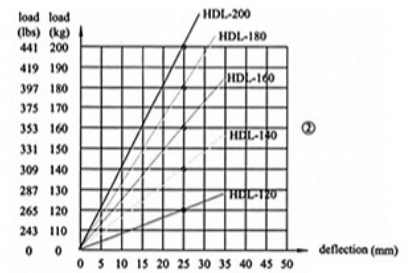
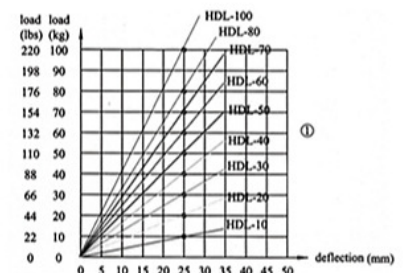
adjusting bolt S2 fixing bolt S1



Technical Data of Type HDL Spring AVM

MODEL	LOAD (kg)	LOAD (lbs)	DEFLECTION (mm)	VERTICAL RIGIDITY k(kg/mm)
HDL-10	10	22	20 ~ 25	0.40
HDL-20	20	44		0.80
HDL-30	30	66		1.20
HDL-40	40	88		1.60
HDL-50	50	110		2.00
HDL-60	60	132		2.40
HDL-70	70	154		2.80
HDL-80	80	176		3.20
HDL-100	100	220		4.00
HDL-120	120	265		4.80
HDL-140	140	309		5.60
HDL-160	160	353		6.40
HDL-180	180	397		7.20
HDL-200	200	441		8.00
HDL-230	230	507		9.20
HDL-250	250	551		10.00
HDL-300	300	661		12.00
HDL-330	330	728		13.20
HDL-360	360	794		14.40
HDL-400	400	882		16.00
HDL-500	500	1102	20.00	

LOAD DEFLECTION CURVE
POINT ● MEANS THE BEST DEFLECTION



Outer Size of Type HDL Spring AVM

MODEL	OUTER SIZE(±2mm)							
	L	C	W	H	ΦD	P	S1	S1
HDL-10~HDL-500	135	102	75	128	14	Φ71	M10×20	M20×60

CÔNG TY CỔ PHẦN QUỐC TẾ THÁI CHÍ

ĐC: Số 22 - Tổ 4 - Phường Cầu Diễn - Quận Nam Từ Liêm - Hà Nội

ĐT: 043 76 333 88 - 043 7633 182 - Fax: 043 7633 183z

E-mail: thaichi@thaichi.vn - Website: www.thaichi.vn - www.loxochongrung.com

MST: 0104 574 954